



**Impulse Water Meter
for use with dosing pumps**

Water Meter

Technical Data sheet
Water Meter

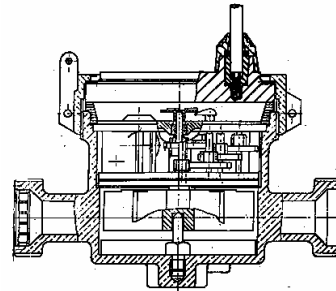
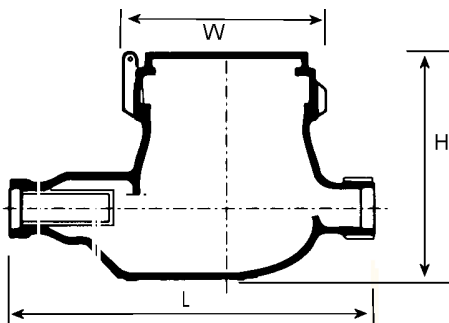


KEY FEATURES

- Various Pulse Rates available
- Suitable for Horizontal Installation
- Produced in the EU
- Low Price
- Low Start up Flow Rate
- 2" meter available threaded or flanged

Specification

| Size | 1/2" | 3/4" | 1" | 1 1/4" | 1 1/2" | 2" |
|---|---------------------------------|------|------|--------|--------|-------|
| | DN15 | DN20 | DN25 | DN32 | DN40 | DN50 |
| Minimum Flow Rate – Q min – l/hr | 30 | 50 | 70 | 100 | 200 | 450 |
| Transitional Flow Rate Qt – l/hr | 120 | 200 | 280 | 480 | 800 | 1050* |
| Nominal Flow Rate – Q norm – m ³ /hr | 1.5 | 2.5 | 3.5 | 5 | 10 | 15 |
| Maximum Flow Rate – Q max – m ³ /hr | 3 | 5 | 7 | 10 | 20 | 30 |
| Pressure Rating (Max) | 10 bar (test pressure 20 bar) | | | | | |
| Maximum Temperature | 50°C | | | | | |
| | * 1200 l/hr for flanged version | | | | | |



Dimensions

| Size | 1/2" | 3/4" | 1" | 1 1/4" | 1 1/2" | 2" |
|----------------------------------|------|------|-----|--------|--------|-----|
| L - Without Couplings (mm) | 110 | 130 | 160 | 160 | 200 | 300 |
| H - Without Couplings (mm) | 100 | 100 | 140 | 140 | 150 | 175 |
| W - Without Couplings (mm) | 62 | 62 | 62 | 85 | 100 | 150 |
| Approx Weight (no Couplings-kg) | 0.5 | 0.9 | 1.8 | 1.8 | 3.5 | 12 |
| Approx Weight (inc Couplings-kg) | 0.8 | 1.1 | 2.1 | 2.1 | 3.8 | 12 |



AQUA WATER SYSTEMS LTD
 Units 3-6 Hodfar Road • Sandy lane Ind Est
 Stourport on Severn • Worcestershire DY11 5UJ
 Tel 01299 827703 • Fax 01299 827704
 Email sales@askaqua.co.uk Web www.askaqua.co.uk

Technical Data Sheet
Water Meter